

# TRACT NO. 14782

BEING A SUBDIVISION OF A PORTION OF THE WEST 1/2 OF SECTION 19, A PORTION OF THE NORTHWEST 1/4 OF THE SOUTHWEST 1/4 OF SECTION 19 AND A PORTION OF THE NORTHWEST 1/4 OF THE SOUTHWEST 1/4 OF SECTION 19, TOWNSHIP 2 NORTH, RANGE 2 EAST, SAN BERNARDINO MERIDIAN, IN THE COUNTY OF SAN BERNARDINO, STATE OF CALIFORNIA, AS SHOWN ON THE RECORD OF SURVEY RECORDED IN BOOK 94, PAGE 8 OF RECORDS OF SURVEY, OFFICIAL RECORDS OF SAID COUNTY.

HICKS & HARTWICK, INC.

OCTOBER, 1998

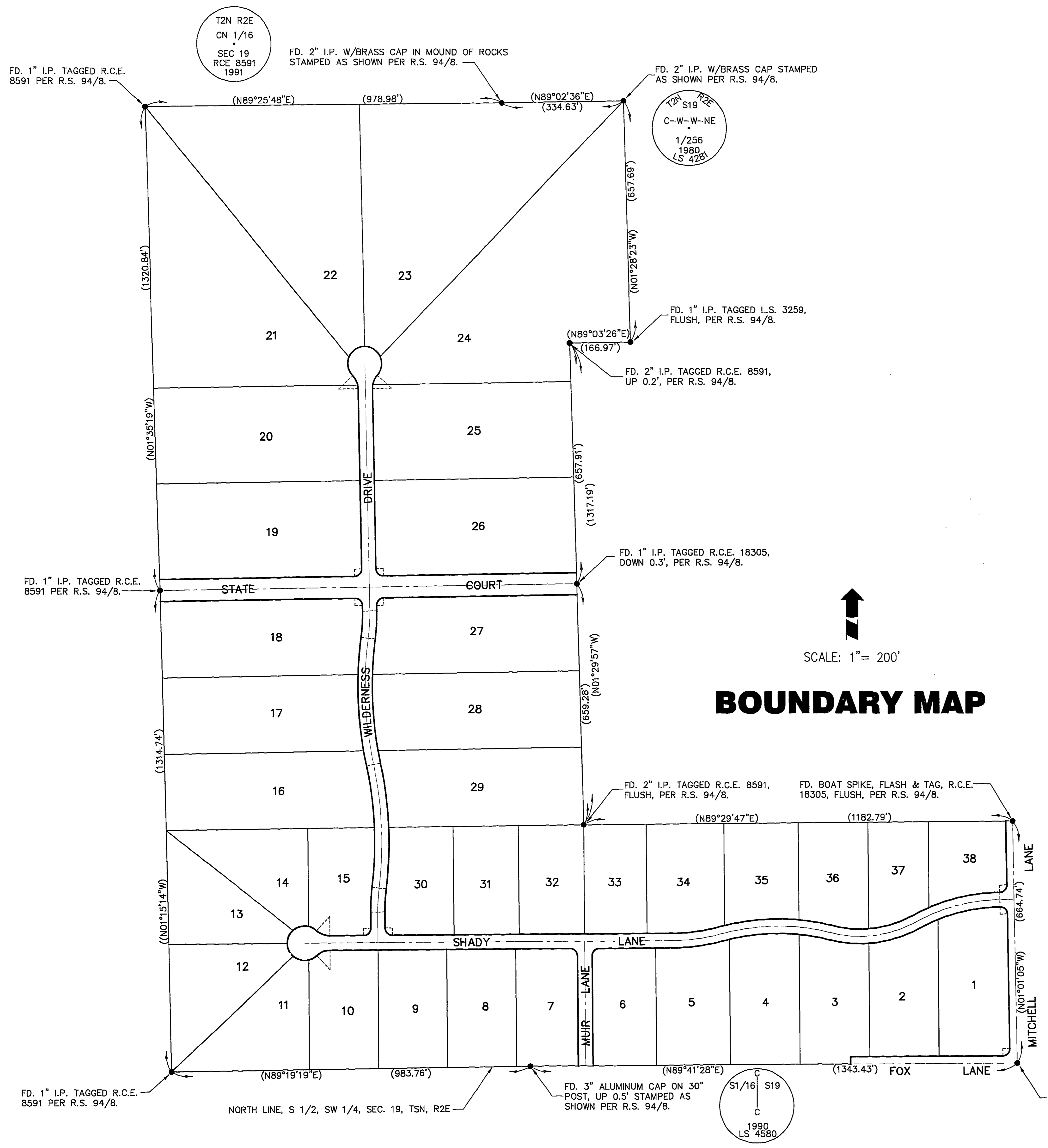
ENGINEERS - SURVEYORS

## COMPOSITE DEVELOPMENT PLAN NOTE

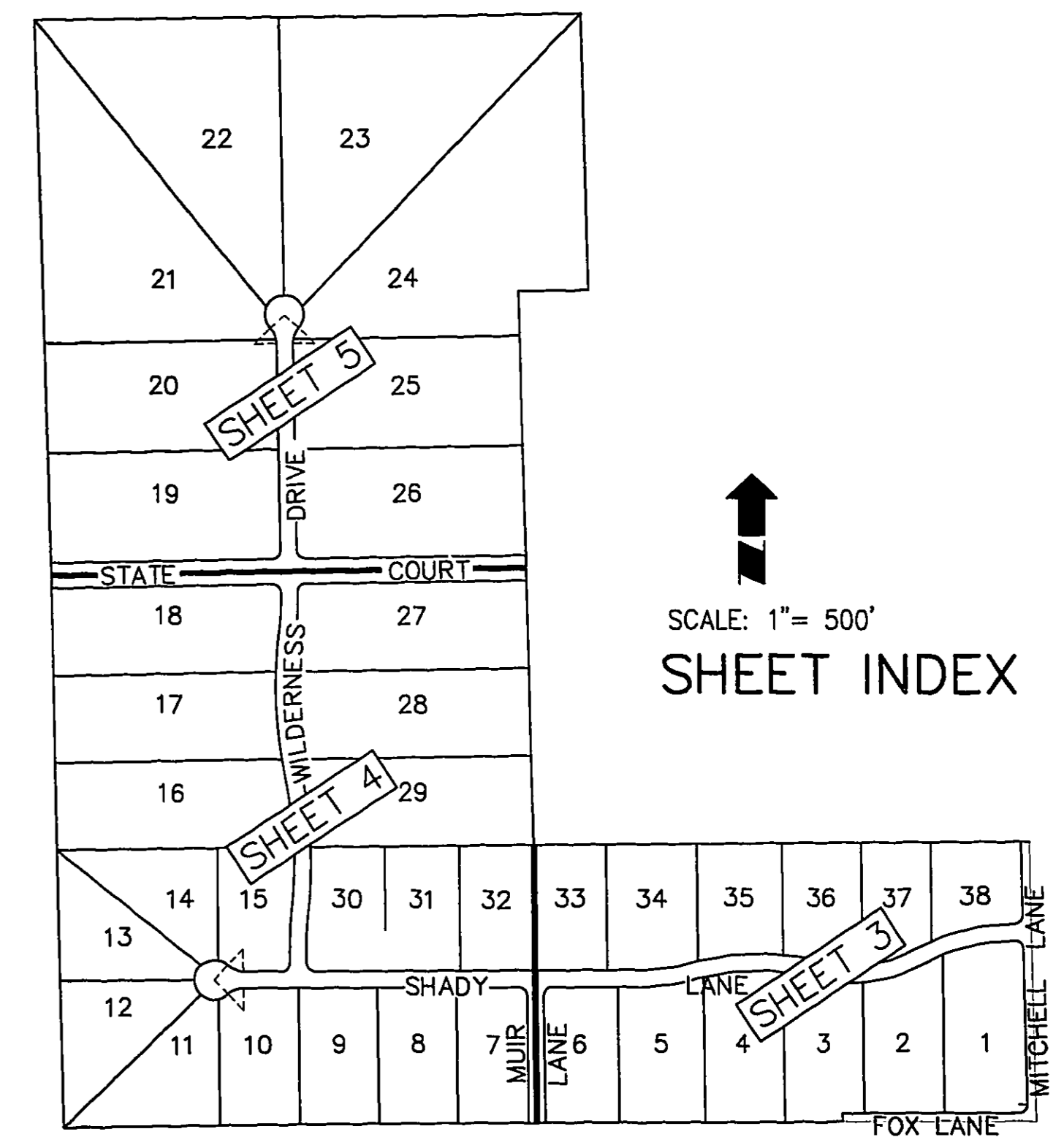
A COMPOSITE DEVELOPMENT PLAN (C.D.P.) AFFECTING THIS MAP IS ON FILE IN THE SAN BERNARDINO COUNTY OFFICE OF BUILDING AND SAFETY.

### ENGINEER'S NOTES

1. THE BASIS OF BEARINGS WAS DERIVED FROM THE NORTH LINE OF THE SOUTH 1/2 OF THE SOUTHWEST 1/4 OF SEC. 19 BEING N89°19'19"E AS SHOWN ON R.S. 94/8.
2. ● DENOTES FOUND MONUMENT AS SHOWN.
3. ○ DENOTES SET 1" I.P., 18" LONG, TAGGED R.C.E. 8591, FLUSH WITH GROUND. SET STREET CENTERLINE MONUMENTS 1/4" BELOW FINISHED PAVEMENT SURFACE.
4. SET 1" I.P., 18" LONG, TAGGED R.C.E. 8591 AT ALL LOT CORNERS AND ANGLE POINTS IN SIDE LOT LINES.
5. ⊙ DENOTES MONUMENT TIED OUT PER TABLE OF TIES TO BE FILED IN THE OFFICE OF THE COUNTY SURVEYOR.
6. THIS TRACT HAS 38 LOTS ON 89.79 GROSS ACRES.
7. ( ) INDICATES RECORD AND MEASURED DATA PER R.S. 94/8.
8. (R) INDICATES RADIAL BEARING.
9. (PRC) INDICATES POINT OF REVERSE CURVE.



## BOUNDARY MAP



## SHEET INDEX